



SHADAN COLLEGE OF ENGINEERING & TECHNOLOGY

Established by SHADAN EDUCATIONAL SOCIETY.
Approved by A.I.C.T.E and Affiliated to JNTUH, Hyderabad.
Website: www.scet.in E-Mail: scet_shadan@yahoo.co.uk

Date: 03/07/2021

Infrastructure and Physical Facilities Available for Teaching and Learning

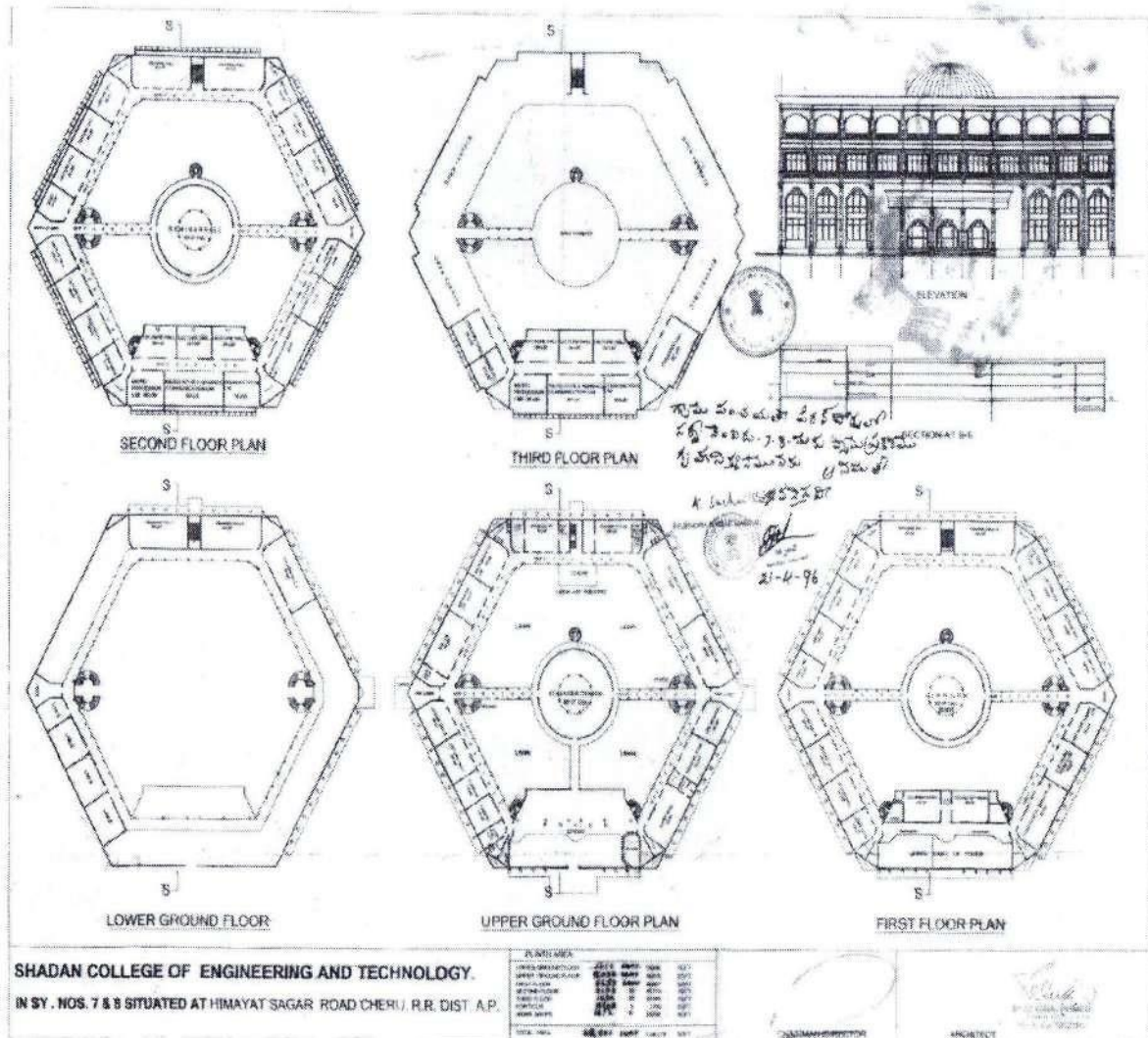
S.No	Facility	Total Number
1	Class Rooms	49
2	ICT Rooms	25
3	Tutorial Rooms	10
4	Drawing halls	02
5	Laboratories	58
6	Research Laboratories	01
7	Workshops	02
10	Seminar hall	02
11	Auditorium	01
12	HOD cabin Rooms	8
13	Staff Rooms	16



Md. J. H. Sagar

PRINCIPAL
Shadan College of Engineering & Technology
Peeran Cheru, Hyderabad-86, T.S.
College Code: 08

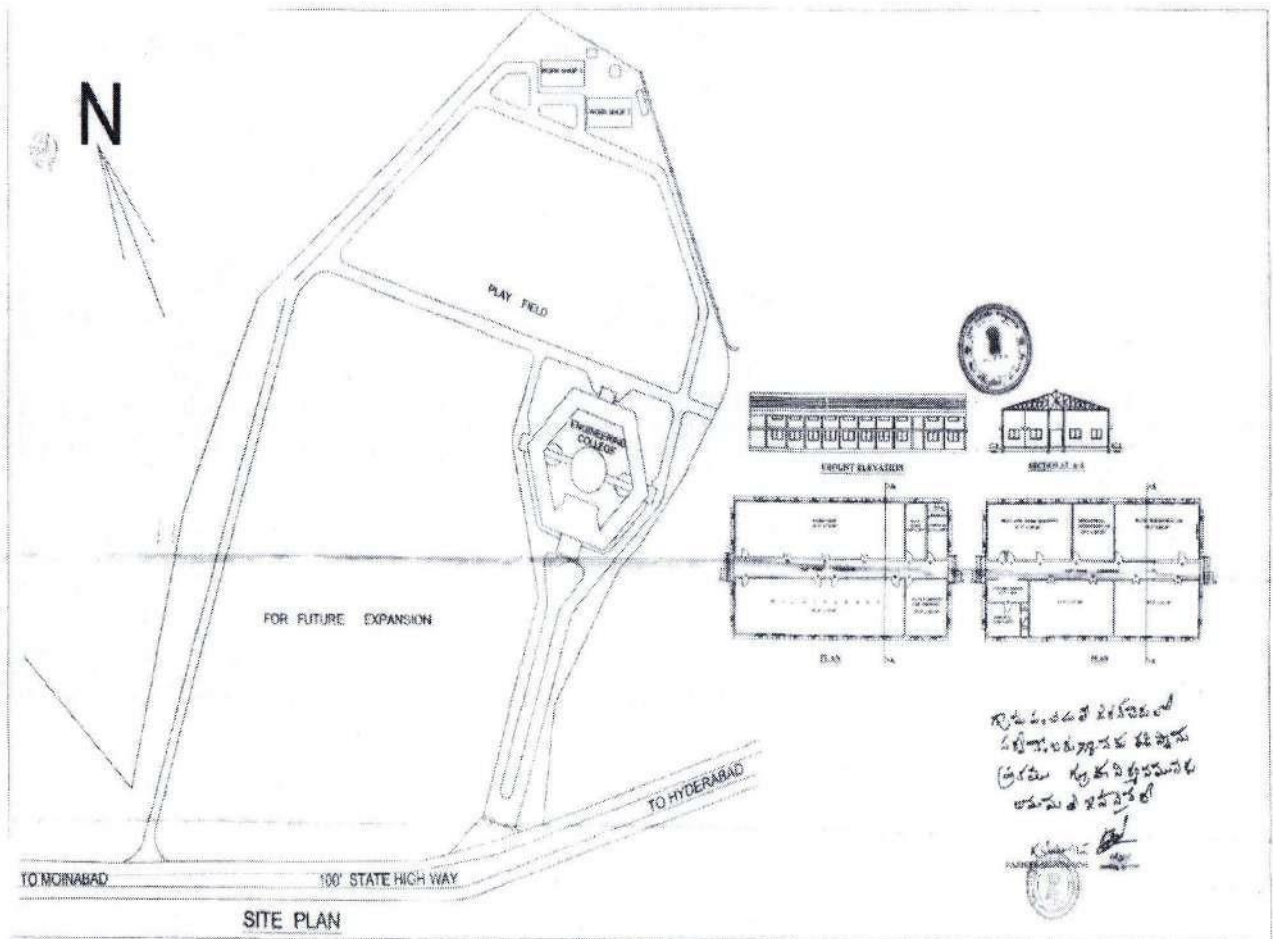
COLLEGE BUILDING PLAN



Md. J. Jeyaraj



PRINCIPAL
Shadan College of Engineering & Technology
 Peeran Cheru, Hyderabad-86, T.S.
 College Code: 08

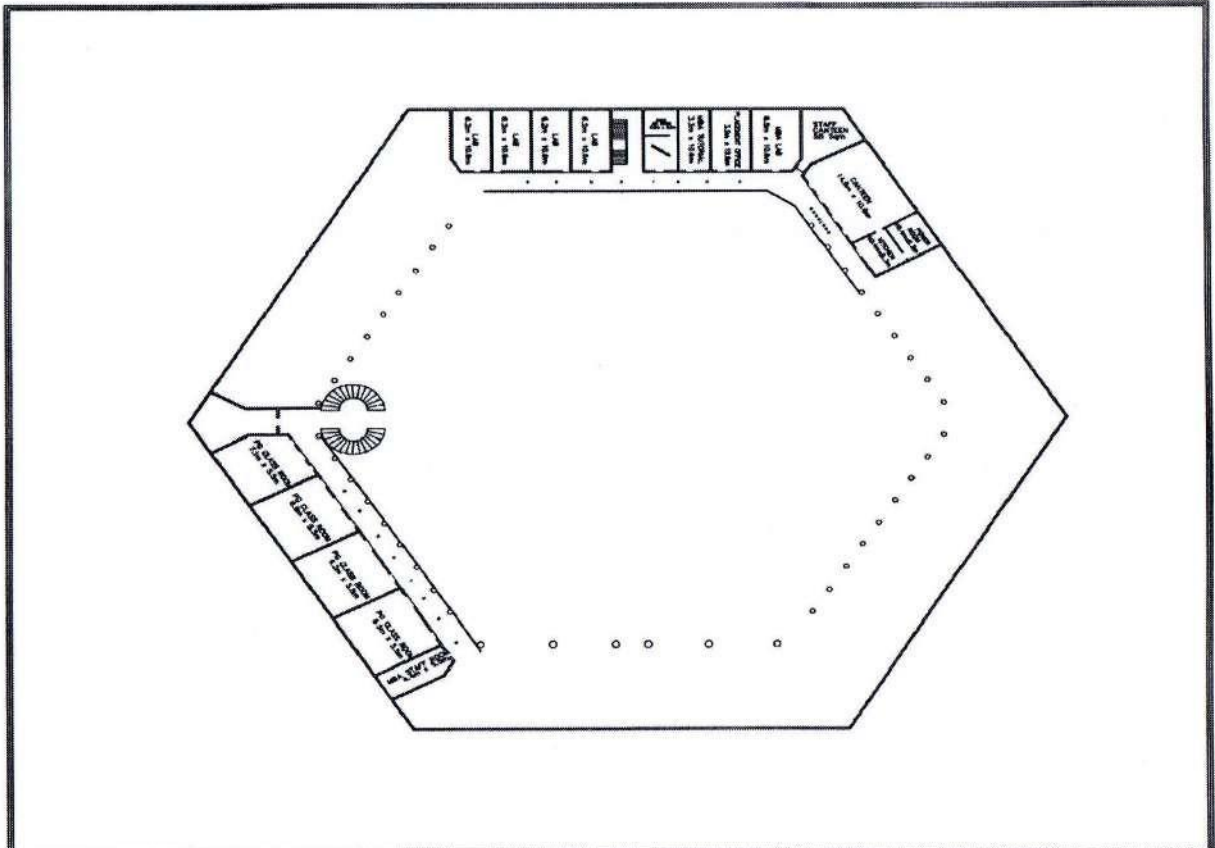


SHADAN COLLEGE OF ENGINEERING AND TECHNOLOGY.	TOTAL LAND AREA: 10 ACRES		
IN SY. NOS. 7 & 8 SITUATED AT HIMAYAT SAGAR ROAD CHERU, R.R. DIST. A.P.		CHAIRMAN/DIRECTOR	ARCHITECT



Md. Shauq

PRINCIPAL
 Shadan College of Engineering & Technology
 Peeran Cheru, Hyderabad-86, T.S.
 College Code: 08



LOWER GROUND FLOOR PLAN

SHADAN COLLEGE OF ENGINEERING
AND TECHNOLOGY

PEERANCERU HYDERABAD

PLINTH : 1450 Sqm

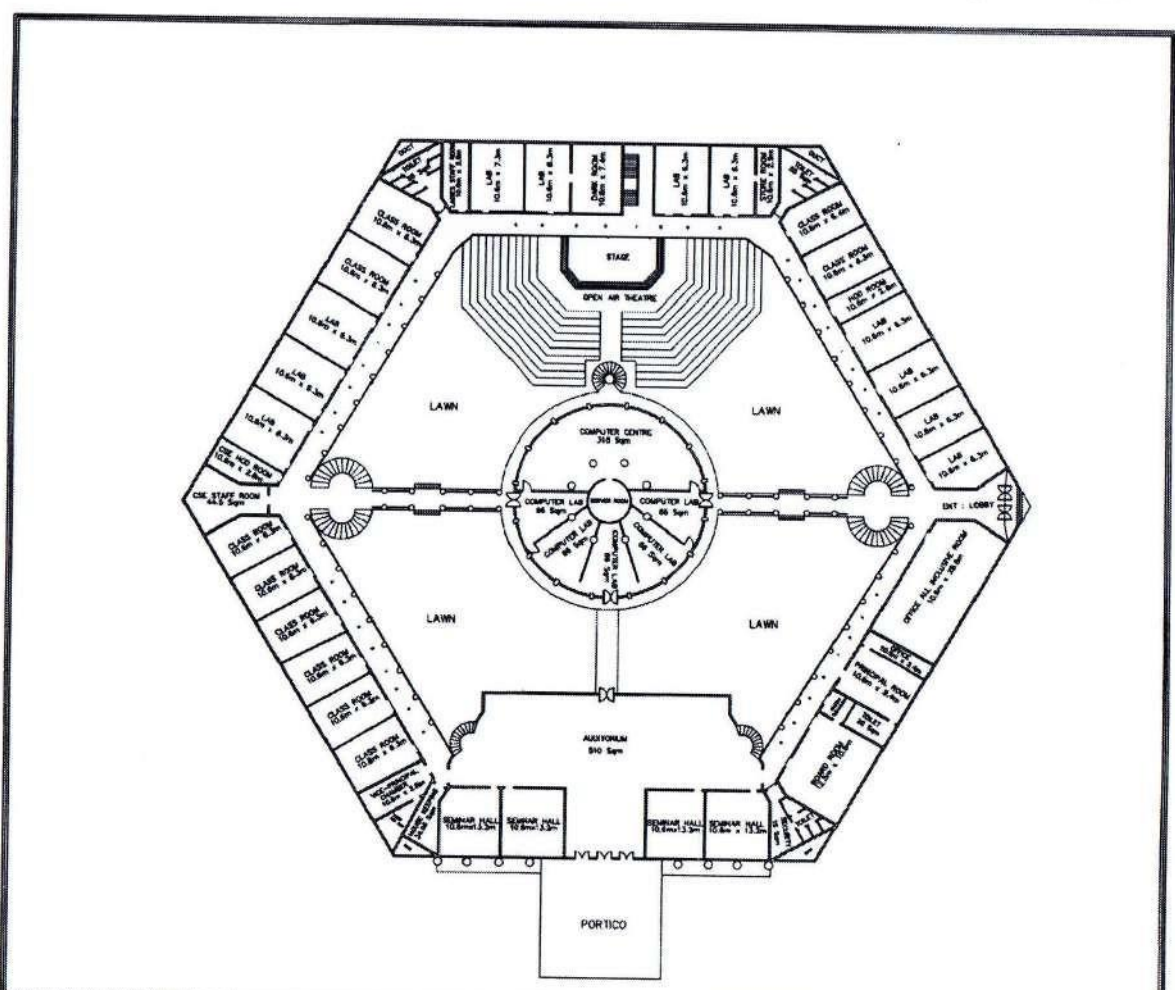
[Signature]
CHAIRMAN
Shadan Educational Society

[Signature]
YED IQBAL AHMED
D.D. FOR M. ARCH. FILLI ALLEN,
M.C.A. (CAT/02/75)

[Handwritten Signature]

PRINCIPAL
Shadan College of Engineering & Technology
Peeran Cheru, Hyderabad-86, T.S.
College Code: 08





GROUND FLOOR PLAN

SHADAN COLLEGE OF ENGINEERING AND TECHNOLOGY

[Signature]
CHAIRMAN
Shadan Educational Society

[Signature]
JYED IQBAL AHMED
S.D. Rank, 12th Rank, P.T.A. ASIA
M.C.A. (CA/7802791)

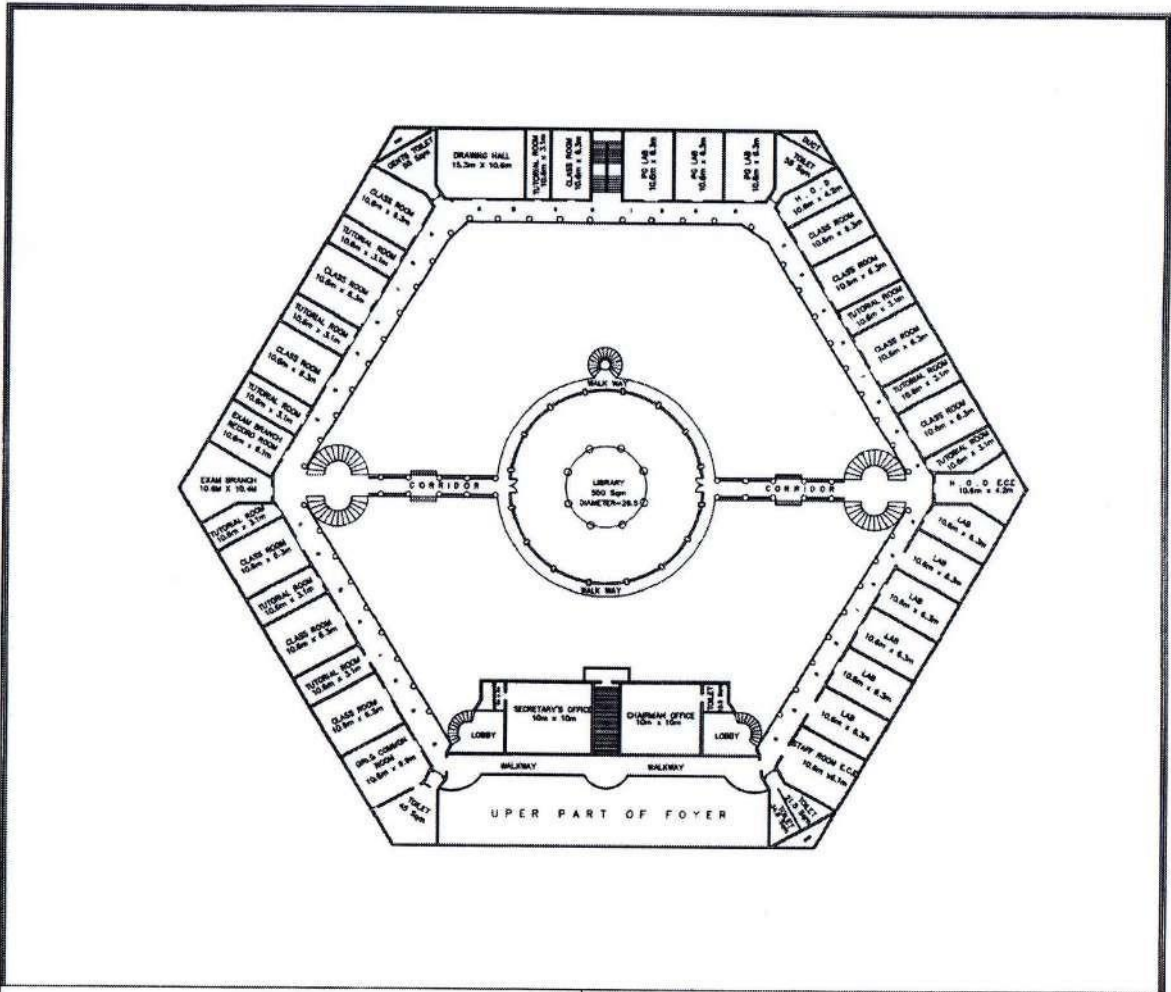
PEERANCHERU, HYDERABAD

PLINTH : 7600 Sqm

[Handwritten Signature]

PRINCIPAL
Shadan College of Engineering & Technology
Peeran Cheru, Hyderabad-86, T.S.
College Code: 08





FIRST FLOOR PLAN

[Signature]
CHAIRMAN
 Shadan Educational Society

[Signature]
JYOTIBAL APTE
 B.E. Arch. & Engg. (PUNJAB),
 M.S.A. (SAP/02/01)

SHADAN COLLEGE OF ENGINEERING
 AND TECHNOLOGY

PEERANCERU HYDERABAD

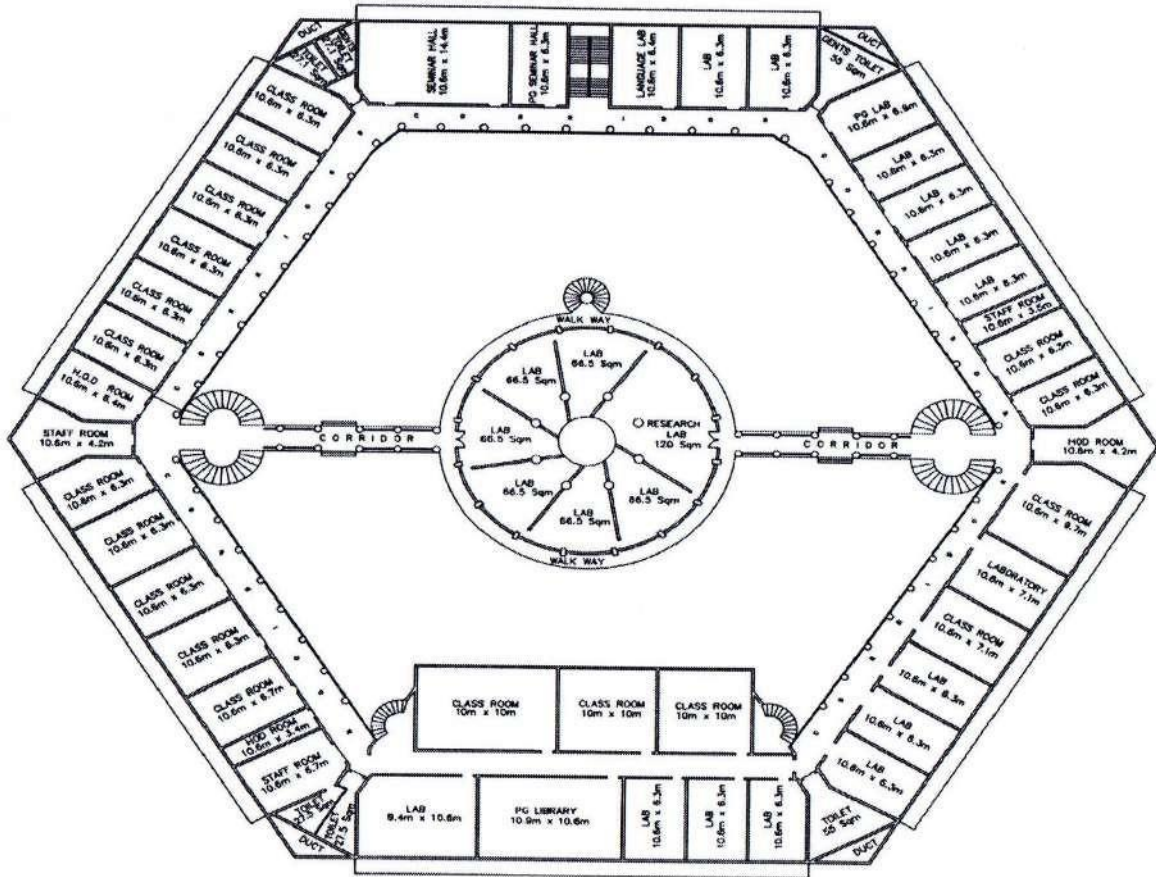
PLINTH : 7000 Sqm

[Handwritten Signature]



PRINCIPAL
 Shadan College of Engineering & Technology
 Peeran Cheru, Hyderabad-86, T.S.
 College Code: 08

SECOND FLOOR PLAN



SHADAN COLLEGE OF ENGINEERING AND TECHNOLOGY
PEERANCERU HYDERABAD

PLINTH : 7000 Sqmt

CHAIRMAN
Shadan Educational Society

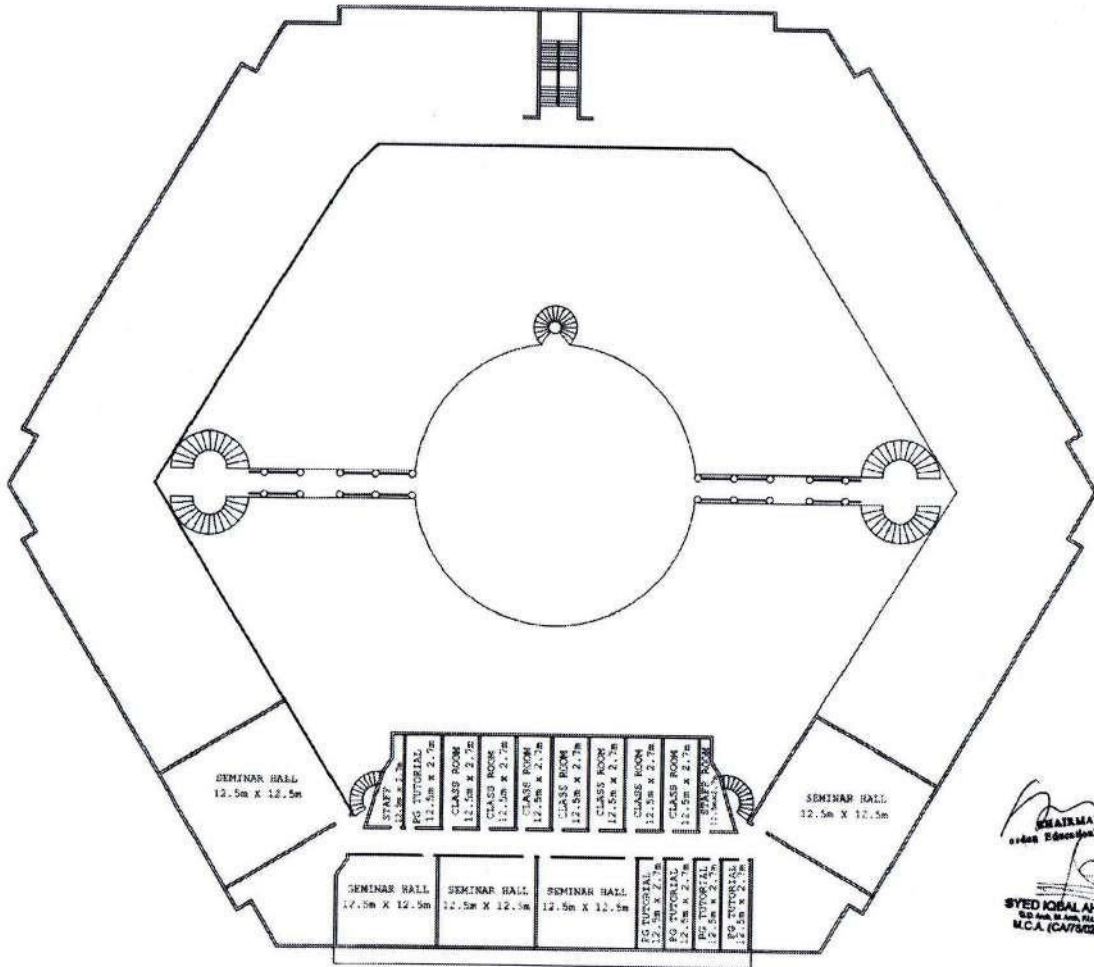
SYED IQBAL AHMED
ARCHT. (P.D. Arch. & Engg. E.I.A.A. A.I.T.O.)
R.E.C.A. (CA/78/0278)

Md. Shafiq



PRINCIPAL
Shadan College of Engineering & Technology
Peeran Cheru, Hyderabad-86, T.S.
College Code: 08

THIRD FLOOR PLAN



CHAIRMAN
Shadan Educational Society

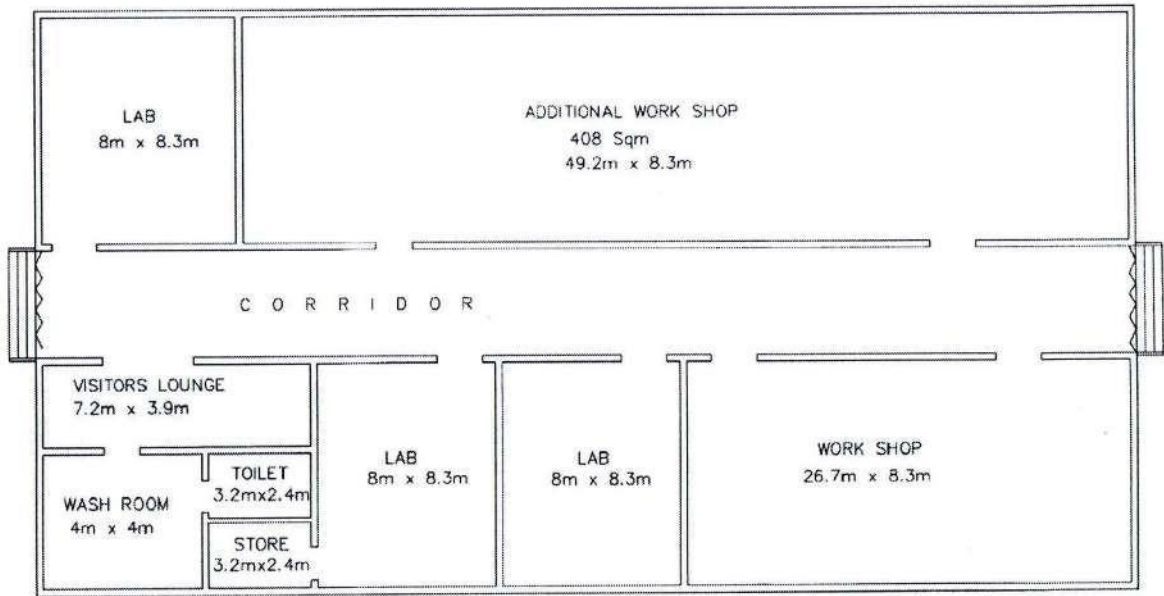
SYED IQBAL AHMED
B.E. & M.E., RAJALAKSHMI
M.C.A. (CA7862791)

Md. J. Heg

PRINCIPAL
Shadan College of Engineering & Technology
Peeran Cheru, Hyderabad-86, T.S.
College Code: 08



Work shop no 1



SHADAN COLLEGE OF ENGINEERING AND TECHNOLOGY
PEERANCERU HYDERABAD

PLINTH : 1200 Sqmt

[Signature]
CHAIRMAN
Karnataka Professional Society

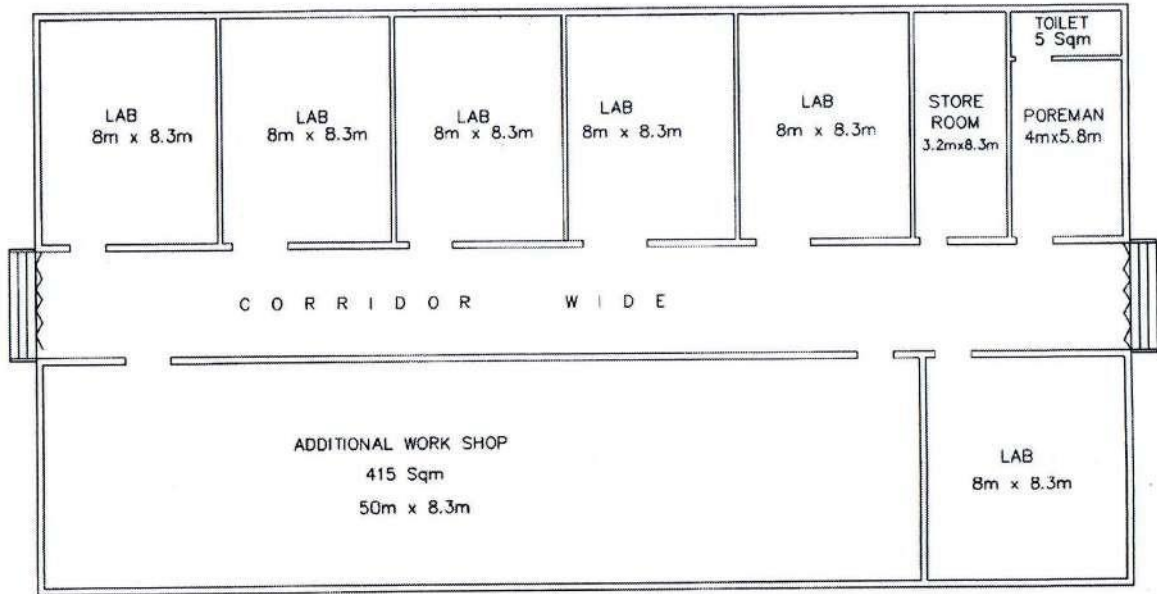
[Signature]
SYED IGHAAL AHMIED
ARCHITECT

[Handwritten Signature]

PRINCIPAL
Shadan College of Engineering & Technology
Peeran Cheru, Hyderabad-86, T.S.
College Code: 08



Workshop no 2



SHADAN COLLEGE OF ENGINEERING AND TECHNOLOGY
PEERANCERU HYDERABAD

PLINTH :1200 Sqmt.

Signature
SHADAN
Educational Society
Signature
SYED KOBAL AHMED
Principal
Peerancheru

Md. Ittefaq
PRINCIPAL
Shadan College of Engineering & Technology
Peeran Cheru, Hyderabad-86, T.S.
College Code: 08

